

CU0415 - 50 lb Self-Contained Ice Machine

Self-Contained Under Counter Cuber with Storage



Features and Benefits

Reliability:

- 3 Year parts and labor warranty.
- Assembled in the USA.
- Corrosion resistant exterior.

Ease of Use:

- Slide back door allows easy access to ice in the bin.
- Intuitive control panel allows for quick and easy operation.
- Ice scoop included.

Compact Design:

- Only 15" wide, the ice maker can be placed in the tightest locations.
- Optional floor mount kit allows for installation under 34" ADA counter tops.

High Production:

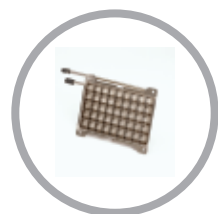
- Produces up to 60 lb (27 kg) per day and stores 36 lb (16 kg), meeting the ice demands for many different applications.

Quality Ice:

- Unique evaporator produces crystal clear cubes.

Environmentally Friendly:

- Low energy consumption.
- Meets US Safe Drinking Act low lead requirements.
- Non-ozone depleting R290 refrigerant.



Clear Cube Evaporator Technology



Unit specific QR code for quick access to service manuals, cleaning guides and warranty history



Ergonomic slide back door allows easy access to ice in the bin



ADA compliant with optional floor mount kit



24 Hour Volume Production

Air Cooled

70°F/21°C 50°F/10°C	Air Water	90°F/32°C 70°F/21°C
60/27 lb/kg		40/18 lb/kg



Cube Ice



Large, slow-melting ice form, ideal for beverages.

Cube Dimensions
7/8" x 7/8" x 7/8"
(2.22 x 2.22 x 2.22 cm)



Certifications



Warranty

- 3 years parts and labor on all components
- Warranty valid in North, South & Central America for commercial installations
- Contact factory for warranty in other regions
- Residential Applications: 1 year parts and labor

CU0415 - 50 lb Self-Contained Ice Machine

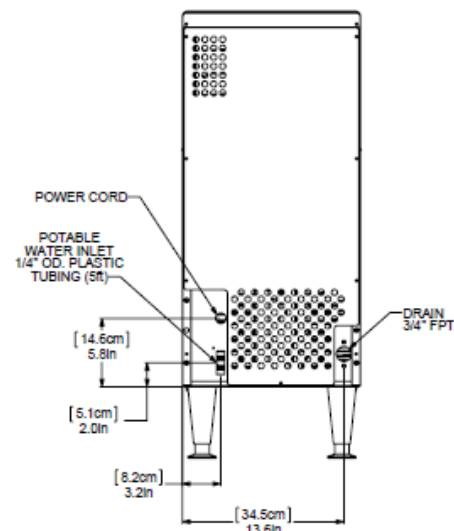
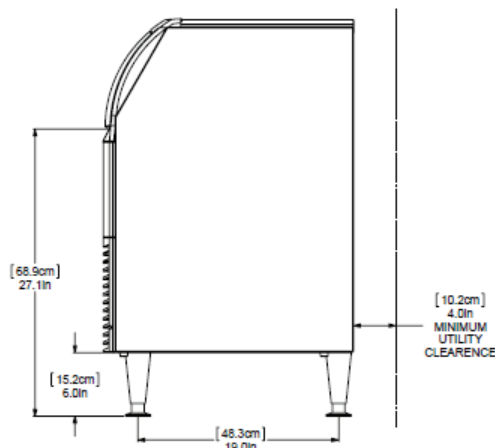
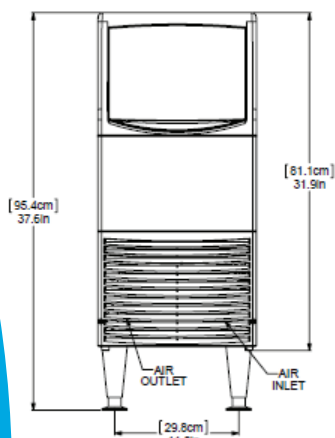
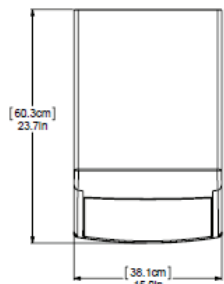
CU0415 - 50 lb Self-Contained Ice Machine

Self-Contained Under Counter Cuber with Storage



Front breathing and no side clearance required, allowing for flexible placement

Recommended Minimum Clearance:
Side: 1/8"
Top: 1/4"
Back: 4"



Specifications

Model Number	Condenser Unit	Storage Capacity	Basic Electrical Volts/Hz/Phase	Max. Fuse size or HACR Circuit Breaker (amps)	Circuit Wires	Min. Circuit Ampacity	Energy Consumption kWh/100 lb (45.4 kg) 90°F (32°C)/70°F (21°C)	Potable Water Usage (Gallons/100 lb [liters/45.4 kg]) Potable 90°F (32°C)/70°F (21°C) Condensor 90°F (32°C)/70°F (21°C)
CU0415MAX-1	Air	36/16	115/60/1	15	2	Cord	9.23	24.6/93.3



All Models

Dimensions (W x D x H):

Unit: 15" X 24" X 38"
(38.1 x 61.0 x 96.5 cm)

Includes 6" (15.24 cm) adjustable legs

Shipping Carton: 17" x 27" x 38"
(43.2 x 68.6 x 96.5 cm)

Shipping Weight: 90 lb / 41 kg
BTUs per hour: 1,500
Refrigerant: R290
Refrigerant Charge (oz): 3.75



Accessories

Model Number	Description
KLP8S	Kit, Leg 6", Stainless Steel
KBC1	Kit, Casters
KUFM15	For ADA applications. Floor mount kit lowers overall height to 31.9"

Scotsman recommends all ice machines have water filtration. See Scotsman water filter specification sheet for details.



Operating Requirements

	Minimum	Maximum
Air Temperatures	50°F (10°C)	100°F (38°C)
Water Temperatures	40°F (4.4°C)	100°F (38°C)
Water Pressures	15 PSIG (1.4 bar)	80 PSIG (5.5 bar)
Electrical Voltage	-5%	+10%

Specifications and design are subject to change without notice.

CU0415 - 50 lb Self-Contained Ice Machine